

Q Fever Facts



What is Q Fever

Q Fever is an infection spread from animals to humans via inhalation of infected particles in the air, carriers are mainly cattle, sheep and goats but can sometimes include native animals.

Q Fever is a notifiable but preventable disease, it is more serious than influenza

Q Fever can cause severe flu-like illness and long-term health problems. Symptoms begin about 2-3 weeks after coming into contact with the bacteria and typically include:

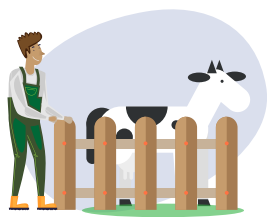


- high fevers and chills
- severe drenching sweats and headache - often behind the eyes
- muscle and joint pains
- extreme fatigue

Further information can be found at: www.qfever.org

Are Transport workers at risk of Q Fever?

Yes, Transport workers are considered high risk workers if you transport and handle:



- Livestock
- Animal products (including hides, wool and raw milk)
- Animal waste (including abattoir waste, animal carcasses and animal manure)

How do you protect yourself from Q Fever?

Vaccination is the most effective way to prevent infection and is recommended for those who work, live in or visit high risk environments.

Not all medical practitioners can provide Q Fever testing and vaccination services. You can go to www.qfever.org/findvaccinator to find a vaccinator near you.

You will need two visits to your general practitioner to complete both pre-vaccination screening (a blood test and skin test) and vaccination. These visits will be seven days apart.

Do transport workers need to demonstrate their Q Fever immune status?

Yes, the need to demonstrate your Q-Fever immune status to current or future employers and interested parties throughout the livestock supply chain is **increasingly becoming a requirement.**

How do I prove I have been vaccinated?

You can carry a Q Fever Card or the new eStatement – this can be obtained by contacting the voluntary Q Fever register at www.qfever.org.

The eStatement can also be downloaded and saved on a mobile device.

What do I need to do to protect my business, myself and my staff?

1. Be **proactive** - start your screening and vaccination program **today**
2. Check if your own or your staff's immune status has been recorded via the **Australian Q Fever helpline on 1300 733 837** or www.qfever.org
3. Encourage your staff to register for and/or download a new eStatement.